

Ring Power®

CAT®



Power Systems Division

RING POWER SYSTEMS – COMPRESSED AIR DIVISION Special Used Listings – May 2018

DIESEL AIR COMPRESSORS

1800 CFM / 100 & 150 PSI IT4 “AF”

ATLAS COPCO XAS1800 DUAL FUNCTIN DIESEL DRIVEN ROTARY SCREW AIR COMPRESSOR. CAT C-15 IT4 ENGINE 1600 CFM @ 150 PSI OR 1800 CFM @ 100 PSI.AFTERCOOLER, WATER SEPARATOR, PD,DD FILTRATION, ELECTRIC BLOCK HEATER, COLD WEATHER PACKAGE, FUEL XPERT, ELECTRIC BRAKES, TANDEM AXLE, PINTLE HITCH.

2012 YEAR	1784 HOURS	S/N: HOP090532	\$169,000
2012 YEAR	1765 HOURS	S/N: HOP090542	\$179,000
2012 YEAR	2600 HOURS	S/N: HOP090559	\$167,000

1600 CFM / 150 PSI “AF”

SULLAIR 1600HAF DTQ RATED 1600 CFM @ 150 PSI, INSTRUMENT QUALITY, AIR AFTERCOOLED, WATER SEPARATOR, FILTRATION TO 0.01 MICRON, CATERPILLAR C-15 DIESEL ENGINE, PREMIUM INSTRUMENT PANEL WITH DIGITAL & MECHANICAL GAUGE PACKAGE, SAFETY SHUTDOWNS, HIGH/LOW PRESSURE SWITCH, 190 GALLON FUEL TANK, TRIPLE AXLE TRAILER WITH SURGE BRAKES & PINTLE HITCH

Limited Warranty: Remaining balance of 5 year / 10,000 hour on air end (must use Sullair AWF & filters)

2011 YEAR	6498 HOURS	S/N: 104300085	\$75,000
2010 YEAR	4747 HOURS	S/N: 010300031	\$99,000
2010 YEAR	4205 HOURS	S/N: 009090006	\$99,000
2009 YEAR	4378 HOURS	S/N: 903300046	\$79,000
2008 YEAR	4180 HOURS	S/N: 805290108	\$105,000
2008 YEAR	4482 HOURS	S/N: 808050008	\$105,000
2007 YEAR	5149 HOURS	S/N: 705190026	\$98,500
2007 YEAR	6959 HOURS	S/N: 702200123	\$80,000
2007 YEAR	6340 HOURS	S/N: 708240029	\$69,000
2007 YEAR	5353 HOURS	S/N: 705230051	\$85,000
2006 YEAR	5662 HOURS	S/N: 609240005	\$80,000



1550 CFM / 135 PSI "OIL FREE"

SULLIAR DE18 RATED 1550 CFM @ 135 PSI, CATERPILLAR DIESEL ENGINE, AIR COOLED AFTERCOOLER, COLD WEATHER PACKAGE, PREMIUM INSTRUMENT PANEL, SAFETY SHUTDOWNS, 245 GALLON FUEL TANK, SKID MOUNTED WITH 115% FLUID CONTAINMENT, SOUND ATTENUATED ENCLOSURE

2002 YEAR	5762 HOURS	S/N: 138589	\$115,000
2004 YEAR	8485 HOURS	S/N: 142604	\$128,000

1550 CFM / 365 PSI – HIGH PRESSURE, AFTERCOOLED, and FILTERED

ATLAS COPCO XRVS1550 CD7 RATED: 1550CFM @ 365 PSI & 1350 CFM @ 508 PSI, AIR AFTERCOOLED, WATER SEPARATOR, PD & QD FILTRATION TO 0.01 MICRON, CATERPILLAR C-18 **TIER 2** ENGINE, FUEL XPERT, COLD WEATHER PACKAGE, 193 GALLON FUEL TANK, TANDEM AXLE TRAILER W/ ELECTRIC BREAKS.

Limited Warranty: One year / unlimited hour on entire package and 5 year / 10,000 hour on air end (must use Atlas Copco oil & filters)

2014 YEAR	1056 HOURS	S/N: HOP090754	\$192,500
-----------	------------	----------------	-----------

1335 CFM / 365 PSI iT4 HIGH PRESSURE "AF"

ATLAS COPCO XRVS1350 PORTABLE AIR COMPRESSOR, RATED 1335 CFM @ 365 PSI, CAT C18 DIESEL iT4 ENGINE, AFTERCOOLER WITH WATER SEPARATOR, FILTRATION, TANDEM AXLE TRAILER, PINTLE HITCH, ELECTRIC BRAKES, FUEL XPERT, **PREHEATER AND COLD WEATHER PACKAGE.**

2015 YEAR	810 HOURS	S/N: APP356471	\$192,500
-----------	-----------	----------------	-----------



1300 CFM / 150 PSI "AF"

SULLAIR 1300HAF DTQ RATED 1300 CFM @ 150 PSI, INSTRUMENT QUALITY, AIR AFTERCOOLED, WATER SEPARATOR, FILTRATION TO 0.01 MICRON, CATERPILLAR C-15 DIESEL ENGINE, PREMIUM INSTRUMENT PANEL WITH DIGITAL & MECHANICAL GAUGE PACKAGE, SAFETY SHUTDOWNS, HIGH/LOW PRESSURE SWITCH, 190 GALLON FUEL TANK, TRIPLE AXLE TRAILER WITH SURGE BRAKES & PINTLE HITCH

2007 YEAR	3706 HOURS	S/N: 706110047	\$69,900
-----------	------------	----------------	----------



1020 CFM / 150 PSI iT4 "AF"

ATLAS COPCO XATS1050 CD7 RATED: 1020 CFM @ 150 PSI, AIR AFTERCOOLED, WATER SEPARATOR, PD & QD FILTRATION TO 0.01 MICRON, CATERPILLAR C-9 **IT4** ENGINE, 142 GALLON FUEL TANK, TANDEM AXLE TRAILER W/ ELECTRIC BREAKS.
 2014 YEAR 750 HOURS S/N: APP234784 \$140,000

900 CFM / 500 PSI -or- 1150 CFM / 350 PSI - HIGH PRESSURE

SULLAIR 900XHH/1150XH DTQ RATED 900 CFM @ 500 PSI -or- 1150 CFM @ 350 PSI, DUAL PRESSURE/DUAL CAPACITY COMBO UNIT, CATERPILLAR C-15 DIESEL ENGINE, PREMIUM INSTRUMENT PANEL, * **COLD WEATHER PACKAGE (ENGINE BLOCK HEATERS/LOUVERS)**, SAFETY SHUTDOWNS, 190 GALLON FUEL TANK, TRIPLE AXLE TRAILER
 2007 YEAR 4094 HOURS S/N: 707310164 \$110,000
 2007 YEAR 3507 HOURS S/N: 708310149 \$135,000

900 CFM / 500 PSI -or- 1150 CFM / 350 PSI - HIGH PRESSURE & AFTERCOOLED

SULLAIR 900XHH/1150XH DTQ RATED 900 CFM @ 500 PSI -or- 1150 CFM @ 350 PSI, DUAL PRESSURE/DUAL CAPACITY COMBO UNIT, CATERPILLAR C-15 DIESEL ENGINE, AFTERCOOLED, PREMIUM INSTRUMENT PANEL, * **COLD WEATHER PACKAGE (ENGINE BLOCK HEATERS/LOUVERS)**, SAFETY SHUTDOWNS, 190 GALLON FUEL TANK, TRIPLE AXLE TRAILER
 2007 YEAR 5533 HOURS S/N: 706140076 \$125,000

425 CFM / 100 PSI "AF"

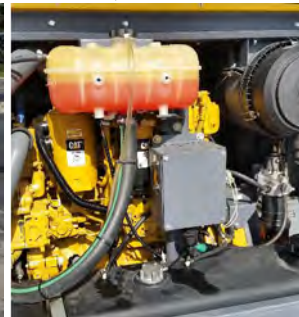
SULLAIR 425AF DPQ RATED 400 CFM @ 100 PSI, INSTRUMENT QUALITY, AIR AFTER COOLED, WATER SEPARATOR, FILTRATION TO 0.01 MICRON, CATERPILLAR 3054C DIESEL ENGINE, CURBSIDE INSTRUMENT PANEL WITH SHUTDOWN SYSTEM ANNUNCIATION MODULE, SAFETY SHUTDOWNS, 48 GALLON FUEL TANK, SINGLE AXLE TRAILER W/PINTLE HITCH, FRESH PAINT
 2005 YEAR 3495 HOURS S/N: 147368 \$19,800

400 CFM / 200 PSI "AF"

ATLAS COPCO XAVS400 RATED 400 CFM @ 200 PSI, INSTRUMENT QUALITY, AIR AFTER COOLED, WATER SEPARATOR, FILTRATION TO 0.01 MICRON, CATERPILLAR 4.4 **IT4** DIESEL ENGINE, XC2002 PREMIUM INSTRUMENT PANEL, SAFETY SHUTDOWNS, 120 VOLT BLOCK HEATER, 58 GALLON FUEL TANK, SINGLE AXLE TRAILER WITH ELECTRIC BRAKES & PINTLE HITCH

Limited Warranty: Remaining balance of 5 year / 10,000 hour on air end (must use Atlas Copco fluid & filters)

2014 YEAR	1533 HOURS	S/N: HOP075510	\$40,000
2014 YEAR	2715 HOURS	S/N: HOP075021	\$39,000
2016 YEAR	688 HOURS	S/N: HOP076600	\$48,000
2016 YEAR	567 HOURS	S/N: HOP076359	\$48,000
2016 YEAR	750 HOURS	S/N: HOP076358	\$48,000
2016 YEAR	525 HOURS	S/N: HOP076599	\$48,000
2015 YEAR	1132 HOURS	S/N: HOP075513	\$48,000
2015 YEAR	400 HOURS	S/N: HOP0	\$48,000
2014 YEAR	2129 HOURS	S/N: HOP075022	\$44,000
2014 YEAR	1202 HOURS	S/N: HOP074667	\$42,000



400 CFM / 150 PSI "AF"

ATLAS COPCO XATS400 RATED 400 CFM @ 150 PSI, INSTRUMENT QUALITY, AIR AFTER COOLED, WATER SEPARATOR, FILTRATION TO 0.01 MICRON, CATERPILLAR 4.4 **IT4** DIESEL ENGINE, XC2002 PREMIUM INSTRUMENT PANEL, SAFETY SHUTDOWNS, 120 VOLT BLOCK HEATER, 58 GALLON FUEL TANK, SINGLE AXLE TRAILER WITH ELECTRIC BRAKES, 3RD WHEEL & PINTLE HITCH

Limited Warranty: Remaining balance of 5 year / 10,000 hour on air end (must use Atlas Copco fluid & filters)

2014 YEAR	971 HOURS	S/N: HOP075215	\$42,500
2014 YEAR	1200 HOURS	S/N: HOP075214	\$37,000

375 CFM / 150 PSI "AF"

SULLAIR 375HAF DPQ RATED 375 CFM @ 150 PSI, INSTRUMENT QUALITY, AIR AFTER COOLED, WATER SEPARATOR, FILTRATION TO 0.01 MICRON, JOHN DEERE 4045HF DIESEL ENGINE, CURBSIDE INSTRUMENT PANEL WITH SHUTDOWN SYSTEM ANNUNCIATION MODULE, SAFETY SHUTDOWNS, HIGH/LOW PRESSURE SWITCH, 48 GALLON FUEL TANK, SINGLE AXLE TRAILER W/PINTLE HITCH,

2009 YEAR	3857 HOURS	S/N: 907310036	\$29,500
2006 YEAR	4748 HOURS	S/N: 605130066 x	\$23,000

300 CFM / 200 PSI "AF"

SULLAIR 300HHAF DPQ RATED 300 CFM @ 200 PSI, INSTRUMENT QUALITY, AIR AFTER COOLED, WATER SEPARATOR, FILTRATION TO 0.01 MICRON, JOHN DEERE 4045HF DIESEL ENGINE, CURBSIDE INSTRUMENT PANEL WITH SHUTDOWN SYSTEM ANNUNCIATION MODULE, SAFETY SHUTDOWNS, HIGH/LOW PRESSURE SWITCH, 48 GALLON FUEL TANK, SINGLE AXLE TRAILER W/PINTLE HITCH,

2006 YEAR	1423 HOURS	S/N: 606300085 x	\$19,500
2006 YEAR	2321 HOURS	S/N: 606300076 x	\$19,500
2006 YEAR	2306 HOURS	S/N: 605310111 x	\$19,500
2006 YEAR	1472 HOURS	S/N: 605250120 x	\$19,500
2006 YEAR	1405 HOURS	S/N: 605260059 x	\$19,500
2006 YEAR	2720 HOURS	S/N: 605190062 x	\$19,500
2006 YEAR	2835 HOURS	S/N: 605190044 x	\$19,500



SULLAIR INDUSTRIAL RENTAL PACKAGES

250HP-300HP VARIABLE SPEED AIR COMPRESSOR

SULLAIR MODEL TSR32 RATED 250 - 300 HP, 1500 CFM, 125-175 PSI, 480 VOLT, 3 PHASE, 60 HZ, TEFC MOTOR, TOSHIBA VARIABLE SPEED DRIVE, SUPERVISOR II, MICROPROCESSOR, Y-DELTA STARTER, AIR COOLED HERESITE COATED AFTER COOLER, SOUND ATTENUATED ENCLOSURE, HEAVY DUTY SKID WITH FORK LIFT POCKETS.

Limited Warranty: Remainder of 5 year Warranty on air end, motor, coolers and receiver tank (must use Sullair fluid & filters)

2008 YEAR	13,233 HOURS	S/N: 809270062	\$90,000
2010 YEAR	12,077 HOURS	S/N: 006250073	\$125,000
2014 YEAR	17,163 HOURS	S/N: 403220006	\$115,000

100HP-200HP VARIABLE SPEED AIR COMPRESSOR

SULLAIR MODEL TSR20 RATED 100-200 HP, 380-970 CFM, 100-175 PSI, 480 VOLT, 3 PHASE, 60 HZ, TEFC MOTOR, TOSHIBA VARIABLE SPEED DRIVE, SUPERVISOR II, MICROPROCESSOR, Y-DELTA STARTER, AIR COOLED HERESITE COATED AFTER COOLER, SOUND ATTENUATED ENCLOSURE, HEAVY DUTY SKID WITH FORK LIFT POCKETS.

Limited Warranty: Remainder of 5 year Warranty on air end, motor, coolers and receiver tank (must use Sullair fluid & filters)

2012 YEAR	17,307 HOURS	S/N: 206290093	\$85,000
2012 YEAR	9071 HOURS	S/N: 204250115	\$95,000
2012 YEAR	22,150 HOURS	S/N: 204270019	\$78,000
2012 YEAR	17,737 HOURS	S/N: 205040020	\$85,000
2011 YEAR	9729 HOURS	S/N: 112190077	\$93,000
2011 YEAR	12,556 HOURS	S/N: 109260139	\$80,000
2011 YEAR	12,645 HOURS	S/N: 109290073	\$80,000
2011 YEAR	12,128 HOURS	S/N: 109220062	\$80,000
2011 YEAR	17,262 HOURS	S/N: 109220054	\$85,000
2011 YEAR	7315 HOURS	S/N: 108300074	\$90,000
2011 YEAR	15,431 HOURS	S/N: 105250106	\$80,000
2011 YEAR	6224 HOURS	S/N: 101310041	\$93,000
2008 YEAR	4809 HOURS	S/N: 809290074	\$65,000
2008 YEAR	15,445 HOURS	S/N: 805280068	\$53,000
2006 YEAR	7129 HOURS	S/N: 605260112	\$59,000
2006 YEAR	7000 HOURS	S/N: 605150048	\$59,000



40HP-75HP VARIABLE SPEED AIR COMPRESSOR

SULLAIR MODEL LSR16 RATED 40-75 HP, 149-351 CFM, 100-175 PSI, 480 VOLT, 3 PHASE, 60 HZ, TEFC MOTOR, TOSHIBA VARIABLE SPPED DRIVE, SUPERVISOR II, Y-DELTA STARTER, MICROPROCESSOR, AIR COOLED HERESITE COATED AFTER COOLER, SOUND ATTENUATED ENCLOSURE, HEAVY DUTY SKID WITH FORKLIFT POCKETS.

2006 YEAR	2998 HOURS	S/N: 607270098	\$55,400 (NEW VSD Drive)
2005 YEAR	21,094 HOURS	S/N: 138747	\$30,500
2005 YEAR	22,426 HOURS	S/N: 138744	\$27,000
2001 YEAR	5136 HOURS	S/N: 124204	\$33,000

SULLAIR INDUSTRIAL PACKAGES

125HP AIR COMPRESSOR

SULLAIR MODEL V200S-125H, RATED 125HP, 587CFM, 125PSI, 480 VOLT, 3 PHASE, 60 HZ, VARIABLE CAPACITY CONTROL, SUPERVISOR CONTROLLER, FULL VOLTAGE STARTER, AIR COOLED AFTER COOLER, OPEN UNIT, HEAVY DUTY SKID WITH FORKLIFT POCKETS

2013 YEAR 25,900 HOURS S/N: 302230024 \$29,500



75HP ELECTRIC AIR COMPRESSOR

SULLAIR MODEL 5509 RATED 75HP, 344CFM, 125PSI, 230 VOLT, 3 PHASE, 60 HZ, FULL VOLTAGE STARTER, AIR COOLED AFTERCOOLER, MOISTURE SEPARATOR, CONDESATE DRAIN, WS CONTROLLER, SKID MOUNTED, ENCLOSURE

2013 YEAR 10,898 HOURS S/N: 302050005 \$22,850

25HP ELECTRIC AIR COMPRESSOR

SULLAIR MODEL 1809 RATED 25HP, 99CFM, 125PSI, 230 VOLT, 3 PHASE, 60 HZ, FULL VOLTAGE STARTER, AIR COOLED AFTERCOOLER, MOISTURE SEPARATOR, CONDESATE DRAIN, WS CONTROLLER, SKID MOUNTED, ENCLOSURE

2011 YEAR 2000 HOURS S/N: 102270011 \$11,750



15HP ELECTRIC AIR COMPRESSOR

SULLAIR MODEL ST1109RD RATED 15HP, 64CFM, 125PSI, 230 VOLT, 3 PHASE, 60 HZ, FULL VOLTAGE STARTER, TANK MOUNTED WIDRYER,

2014 YEAR 20,341 HOURS S/N: 405130080 \$9,300

10HP ELECTRIC AIR COMPRESSOR

SULLAIR MODEL ES6-10H RATED 10HP, 36CFM, 125PSI, 230 VOLT, 3 PHASE, 60 HZ, FULL VOLTAGE STARTER, AIR COOLED AFTERCOOLER, ELECTRO-MECHANICAL CONTROLS, OPEN CONFIGURATION,

2007 YEAR N/A HOURS S/N: 709060069 \$3,750

10HP ELECTRIC AIR COMPRESSOR

SULLAIR MODEL ST709RD RATED 10HP, 36CFM, 125PSI, 230 VOLT, 3 PHASE, 60 HZ, FULL VOLTAGE STARTER, TANK MOUNTED WIDRYER,

2014 YEAR 20,341 HOURS S/N: 405130080 \$7,700

AIR DRYER PACKAGES

1600CFM DELIQUESCENT AIR DRYER

VANAIR MODEL FD-1600 BLAST PAK AIR DRYER SYSTEM. RATED: 1600 CFM @ 175 PSI. INCLUDES AFTERCOOLER DELI DRYER AND SEPARATOR.

2016 YEAR N/A HOURS S/N: 16-11-7966 \$13,500

600CFM HEATLESS DESICCANT AIR DRYER

AIRCEL MODEL AHLD-600 RATED 600CFM, 100 PSI, 115 VOLT, SINGLE PHASE, 60 HZ, -40 DEW POINT, PRE AND AFTER FILTRATION, SKID MOUNTED WITH FORKLIFT POCKETS

2013 YEAR N/A HOURS S/N: TB0953XXM \$7,500

350CFM HEATLESS DESICCANT AIR DRYER

AIRCEL MODEL AHLD-350E RATED 350CFM, 100 PSI, 115 VOLT, SINGLE PHASE, 60 HZ, -40 DEW POINT, PRE AND AFTER FILTRATION, SKID MOUNTED WITH FORKLIFT POCKETS

2012 YEAR N/A HOURS S/N: SG0870SXA \$3,750

Inventory Reduction

******* iT4 HIGH PRESSURE BOOSTER PACKAGES *******

****NEW** 1000 PSI – BOOSTER ** IN STOCK****

ATLAS COPCO / HURRICANE B7-41/1000 RATED: 750 PSI @ 2400 CFM or 1000 PSI @ 2160 CFM, CATERPILLAR C-7 **IT4** ENGINE, AUTOMATIC LOAD/UNLOAD, BOOSTER BYPASS MANIFOLD, PRECOOLER & AFTERCOOLER, SUCTION SCRUBBER TANK, SKID MOUNT W/ **FULL PROTECTION FRAME**, CENTER LIFTING EYE, 80 GALLON FUEL TANK, ANALOG CONTROL PANEL W/ FULL INSTRUMENT GAUGE PACKAGE.

Limited Warranty: One year / 2000 hour (Must use Atlas Copco / Hurricane fluids & filters)

2012 YEAR	0 HOURS	S/N: TBD	\$165,000
2012 YEAR	341 HOURS	S/N: 10111538	\$138,000



- ++ Warranty: Remaining balance of Caterpillar limited 5 year / 10,000 hour engine ESC (Must use Cat oil & filters)
- + Warranty: Remaining balance of either the Caterpillar limited 5 year / 6,000 hour engine ESC (Must use Cat oil & filters) or John Deere limited 5 year / 5,000 hour standard engine warranty (Must use John Deere oil & filters)
- x Warranty: No Balance of Air End Warranty Remaining on These Units

******* ALL UNITS SUBJECT TO PRIOR SALE AND PRICE CHANGE *******

All units are sold as is. No warranty unless stated in equipment description.

Hour meter readings are subject to change
ALL PRICES ARE QUOTED EX-WORKS ST. AUGUSTINE, FL

CONTACT INFORMATION

CORPORATE OFFICE:

500 World Commerce Parkway
St. Augustine, Florida 32092
Phone: 904-737-7730
Fax: 904-281-0831
Web Site: <http://compressedair.ringpower.com>

IF YOU ARE CALLING FROM OUTSIDE FLORIDA:

Chris Kaczmarczyk (904) 494-1285 - Sales
Jim Huber (813) 865-2507 – Sales

CATERPILLAR DEALERS:

Hunter Hendrix (904) 494-1264 – CARC Manager

IF YOU ARE CALLING FROM WITHIN FLORIDA:

